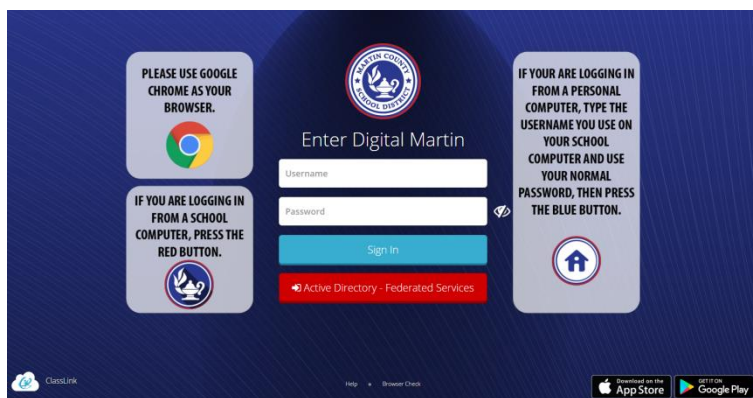


1. Sign In

Sign in with your school network login.

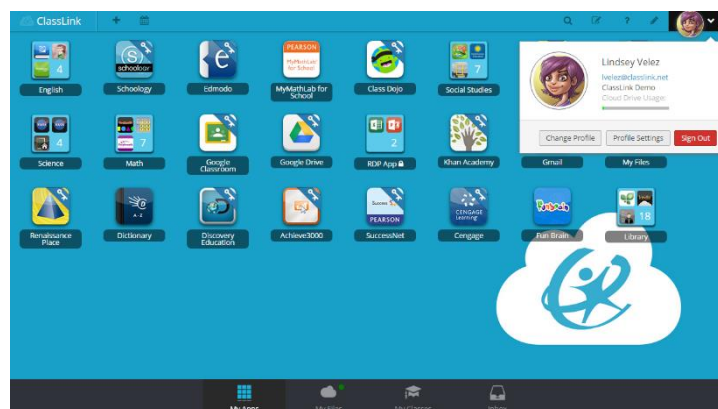
Username: 4300#

Password: Domain password (what you use to log-in at school)



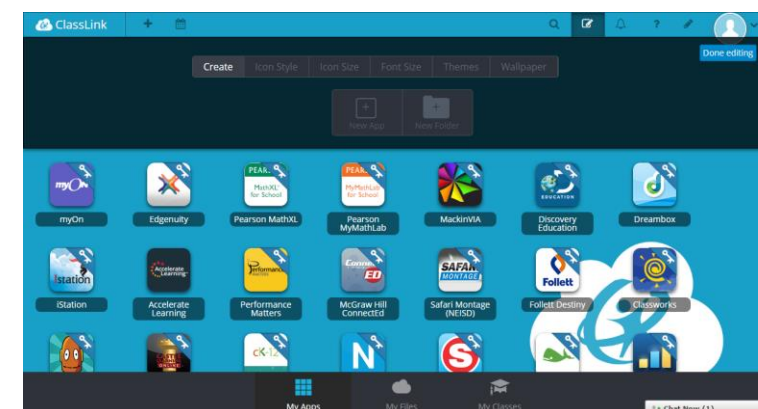
2. My Profile

Here is where you change your profile picture, access your password locker, sign in with options, password recovery options and two factor authentication.



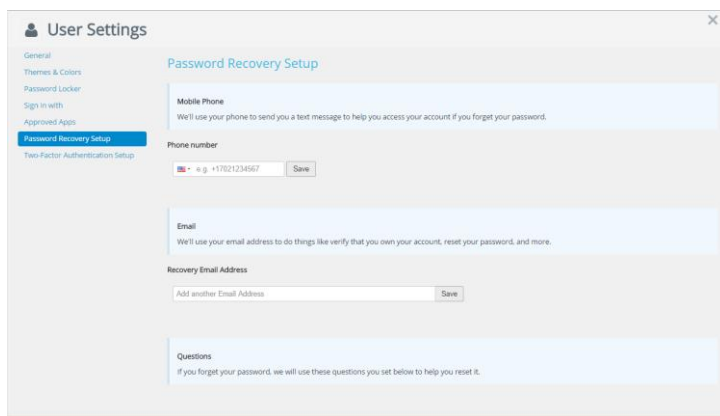
3. Edit Mode

To go into Edit Mode, click the paper and pencil symbol on the top right of your screen. While in Edit Mode, you can create folders and customize your My Apps screen.



4. Password Locker

Profile Settings > Password Locker allows you to update and change your stored username and passwords for your Single Sign On applications.



5. My Apps

The My Apps screen is where all of your online resources will be located. Enter your username and password once (if prompted) and ClassLink will remember it for you!



6. App Library

The library contains over a thousand educational resources to choose from. Click the Plus (+) on the top left of the My Apps screen. Click Add on any app to place it on the My Apps screen.

